

DashLogic™ Configuration Guide

STEP 1

Slide the profile switch all the way over to Config. (closest to USB port)

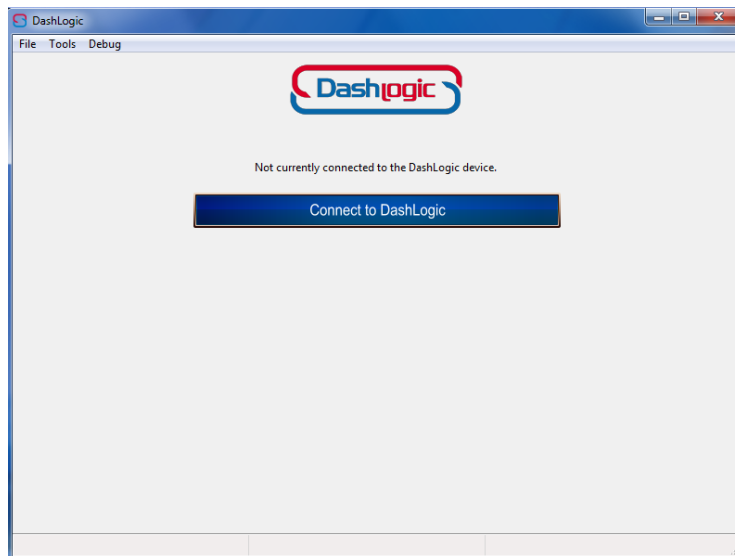
STEP 2

Open DashLogic configuration software and connect the supplied USB cable to the DashLogic and your computers USB port.



STEP 3

Click "Connect to DashLogic".



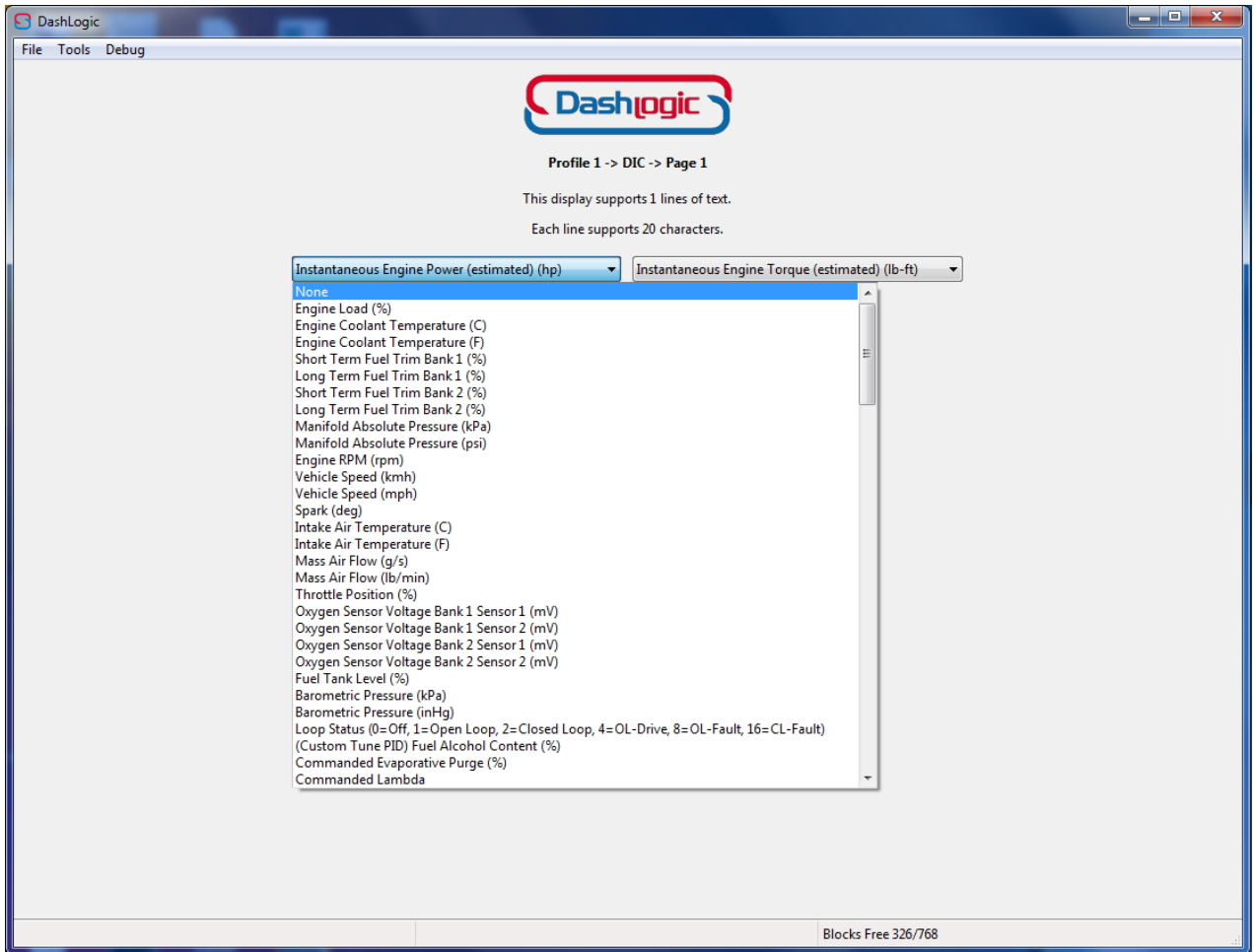
STEP 4

Choose the profile that you would like to edit. Then choose which part of the display you would like to edit.



STEP 5

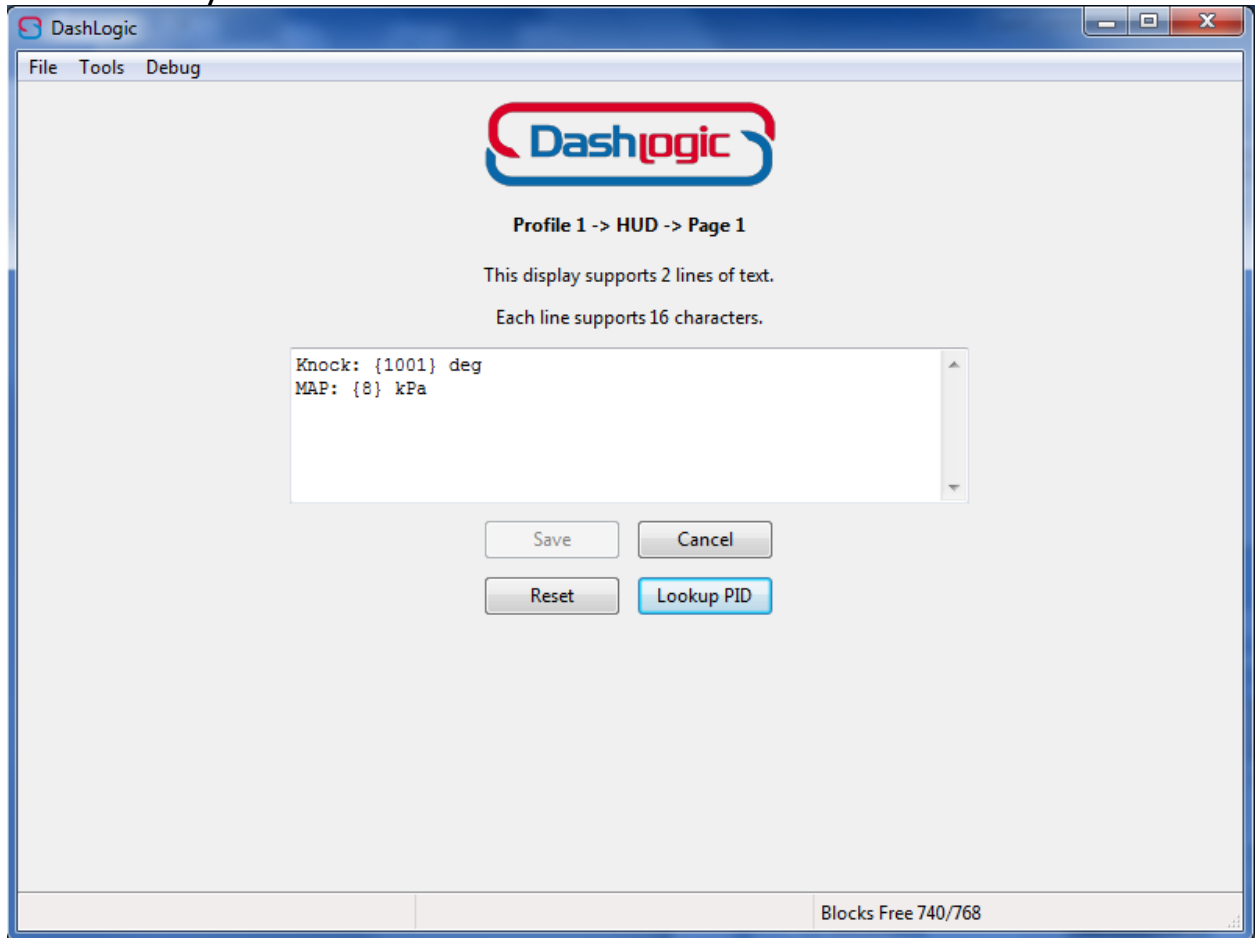
Select the page you would like to edit and choose "Simple Mode". From the drop boxes you can select the PIDs you would like to view, then click "Save". When you are done you can disconnect the DashLogic and plug it into your vehicle.



Advanced Mode

Using Advanced Mode allows you to configure the display exactly like you would like it to appear. You would use the same steps as above, except you would click on Advanced Mode instead of Simple Mode.

This will be your Advanced Mode screen to edit:

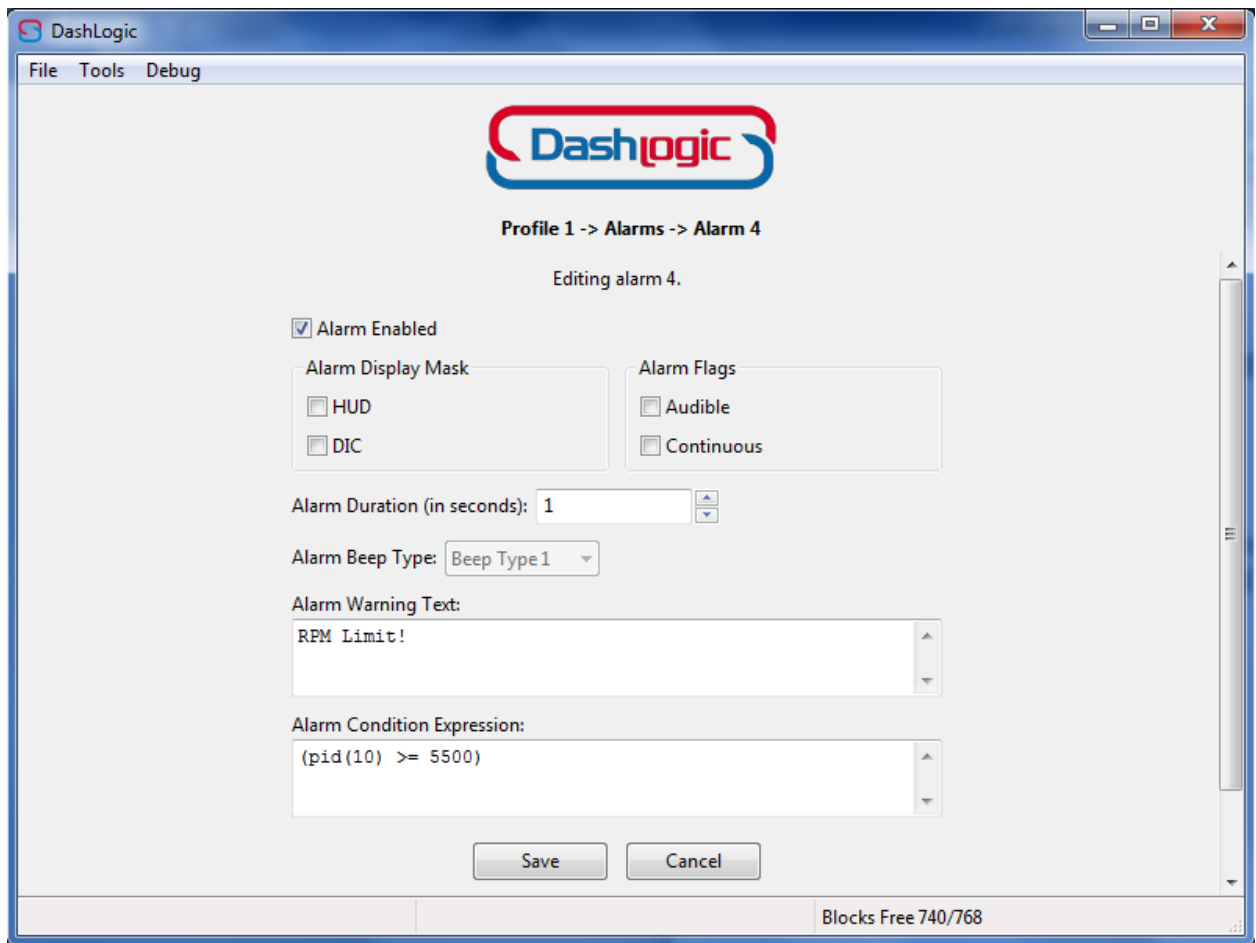


You have the option to change the text in any way you would like as long as it will fit the character description of the display. If you have a two line display like the picture shown above, the line you place the text on will appear on the line it is shown. The text appears how you place it, the number in the curly braces { } is the PID that will be used. You can click the "Lookup PID" button to find all PIDs for your vehicle. The tool will not account for the length of the values you are going to receive from the PID, so make sure you count enough digits for the PID you are using to fit. For example, RPM would need 4 digits and Knock would only need 1 or 2 digits. Once you are finished, click the "save" button and you can go test it out on your vehicle to see if it appears like you intended. You also have the ability

to change your value to show a decimal and hold the number of spaces you want. The reason to hold the spaces is usually for a value that changes from a single digit number to several digits and makes the text appear to shift left and right. To do this we add some extra numbers inside of the curly braces { } that hold our PID number. After the PID number you will add a colon : and then the character you want to pad with (you can use a space, pound sign, period, ect. but must enter something), then the number of pad values you want to reserve, then a decimal, and the number of digits you want after the decimal. For example the expression {8: 5.1} would be PID 8 holding a minimum of 5 digits and 1 digit of precision. Remember that the decimal point counts as a space/digit, so reading 125.2 kPa is 5 digits in this case. If you do not care about the padding and only want the decimal precision you could enter the expression like this {8: 0.1} Note: You can only enter numbers from 0-9 for the padding amount and for the precision amount.

Alarms

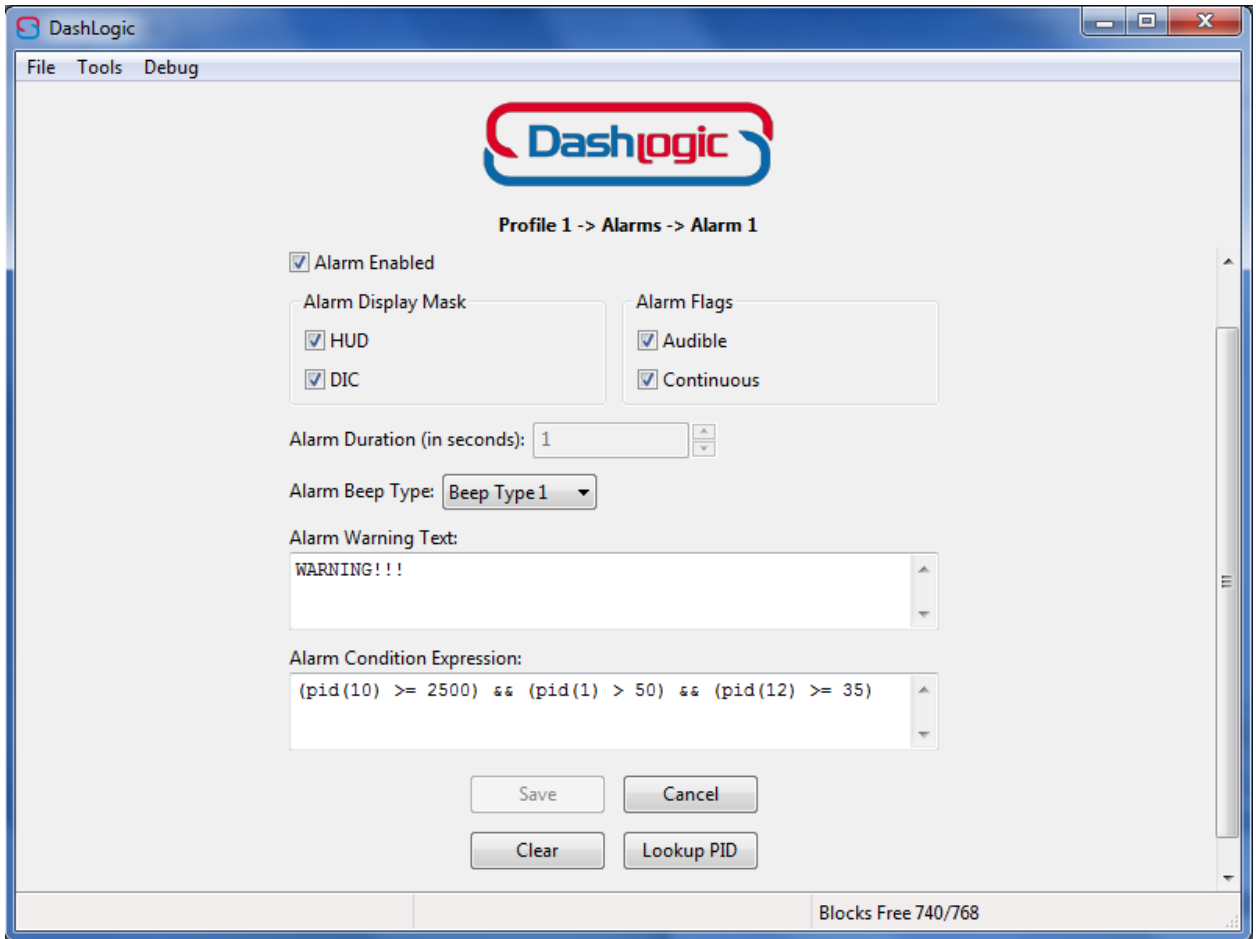
Alarms lets you set alerts from the data you choose. Enter Alarms from the menu and you will get a screen that is already populated with an RPM alert. First click the box to enable the alarm. Then you can click the boxes to display on the DIC or HUD or both. Clicking the box with "Audible" means it will sound a chime chime when an alert is reached. Checking the "Continuous" box means it will not stop the warning until you are no longer in the alert condition. If you do not select continuous, you can set the alarm duration in seconds that it will show or chime before stopping the notification. The "Alarm Warning Text" is what will show while the alarm is active, make sure you account for the number of characters available on your display.



To set an alarm condition, you set the condition inside of parentheses (). First you write "pid" and then enter the PID number in parentheses (). You can click the "Lookup PID" button if you need to find the PID number. The default example in the box shows "RPM greater than or equal to 5500".

To add more conditions, you simply add more conditions and separate them by "and" typed && or you can separate them by "or" typed || (that is a pipe character located on the key with the backslash \). Below is an example of the expression "RPM greater than or equal to 2500 AND Engine Load greater than 50 AND Vehicle Speed greater than or equal to 35". Remember, you can click the "Lookup PID" button to see the available PIDs and their corresponding numbers. You can also add in the "Alarm Warning Text" a PID number to show the live value you are getting. You

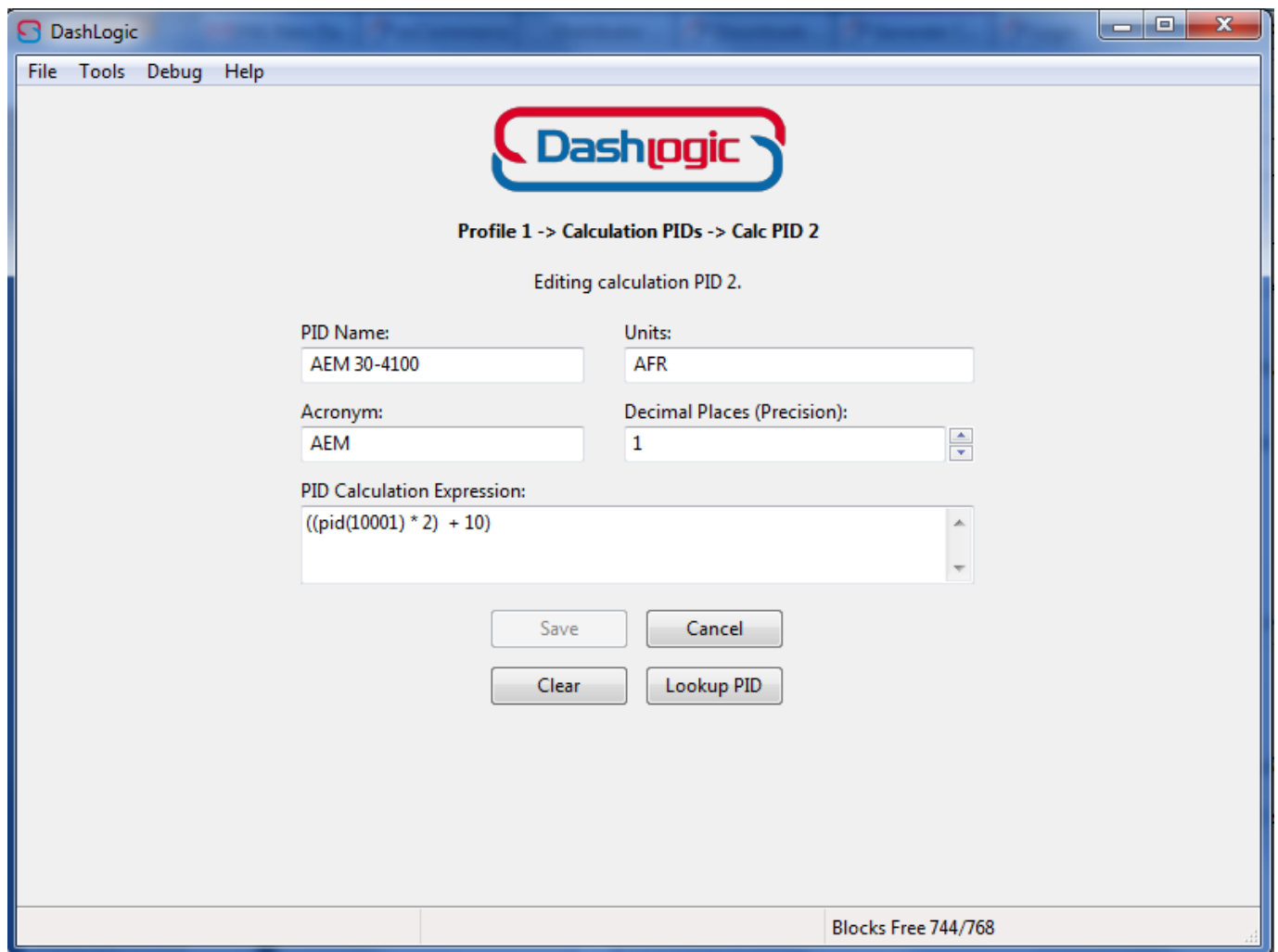
would just place the PID number in the curly braces { }. For example if you had a knock alert, you could add the knock PID number in the braces { } to see the amount of knock while getting the alert.

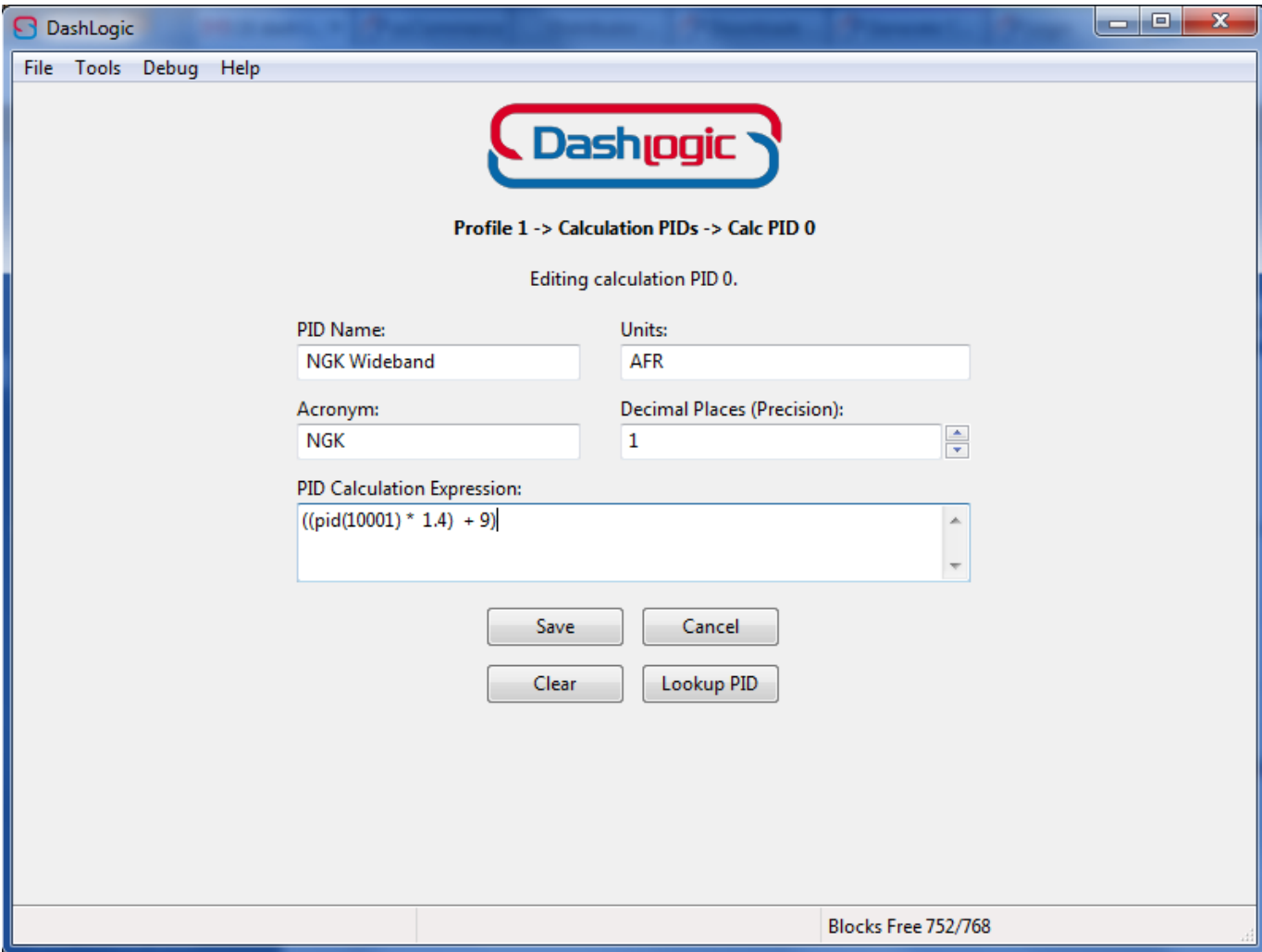
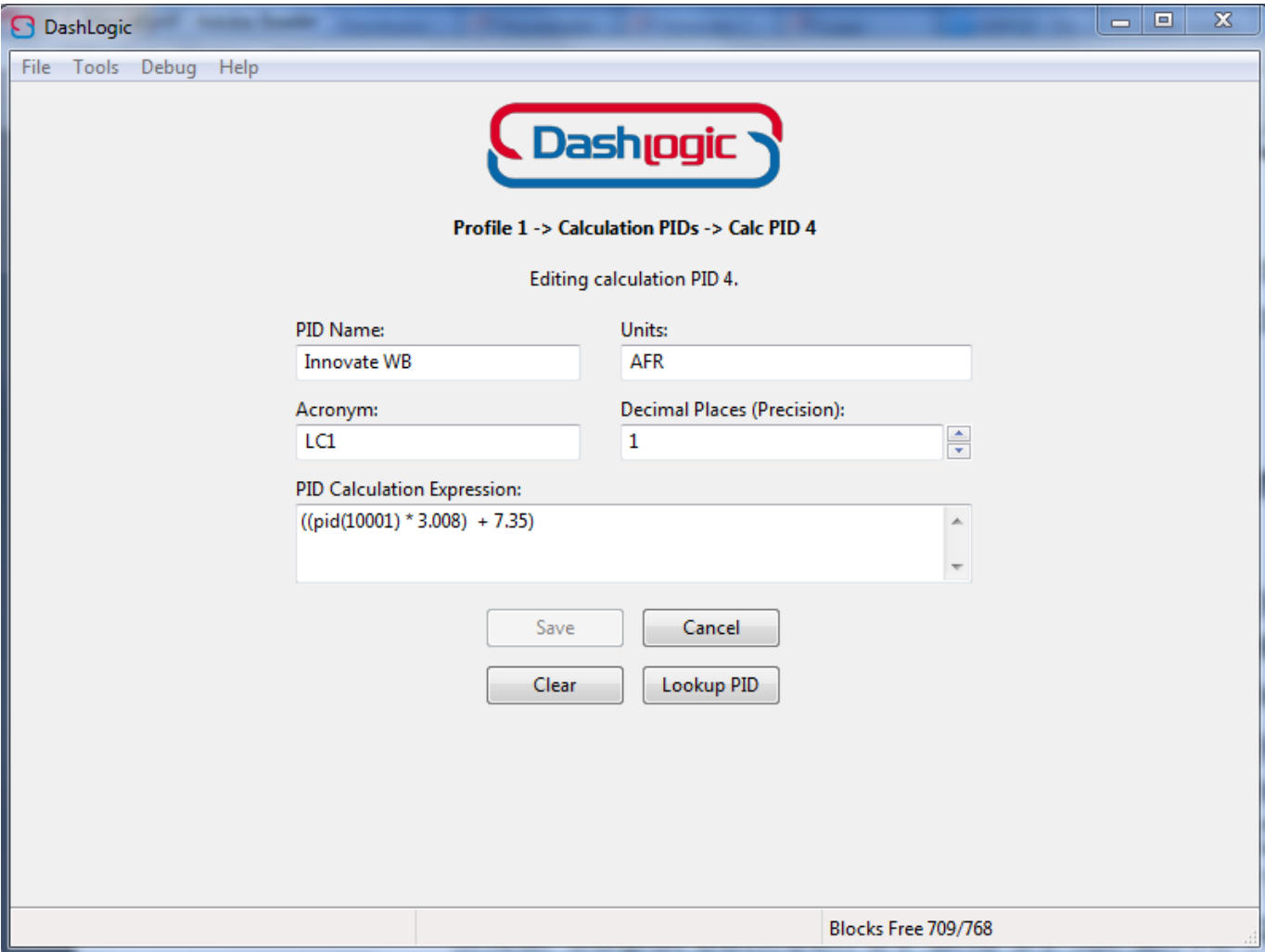


DashLogic™ Analog Inputs Guide

To install analog inputs, simply run the analog output wire from your aftermarket sensor to one of the AD inputs on the DashLogic device. After you have it connected, you need to use the DashLogic Configuration software to create a calculation PID for your sensor. The manufacturer of your sensor will have the formula you need to use to change the raw voltage output to a number you can relate to. If you plug into AD1, the PID number is 10001, AD2 is PID 10002. Once you have created a calculation PID for your sensor, you can add it to the display just like all other PIDs, it will be shown in the list with whatever name entered in the "PID Name" box.


Below are images showing the formulas for several common sensors, adjust the pid(1000x) to the number corresponding to the AD slot you are using.





DashLogic

File Tools Debug Help



Profile 1 -> Calculation PIDs -> Calc PID 3

Editing calculation PID 3.

PID Name: Units:


Acronym: Decimal Places (Precision):

PID Calculation Expression:

Blocks Free 712/768

DashLogic

File Tools Debug Help



Profile 1 -> Calculation PIDs -> Calc PID 5

Editing calculation PID 5.

PID Name: Units:

Acronym: Decimal Places (Precision):

PID Calculation Expression:

Blocks Free 703/768